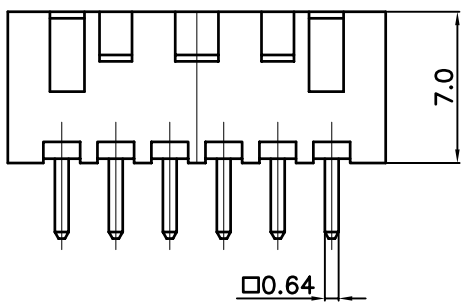
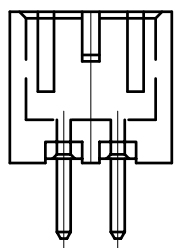
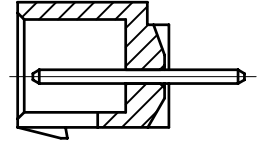
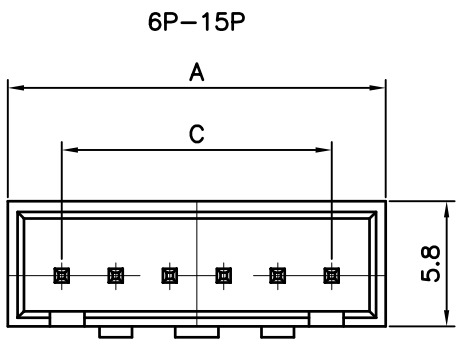
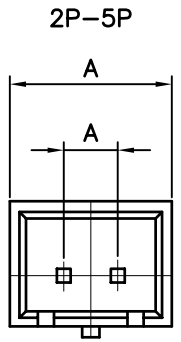
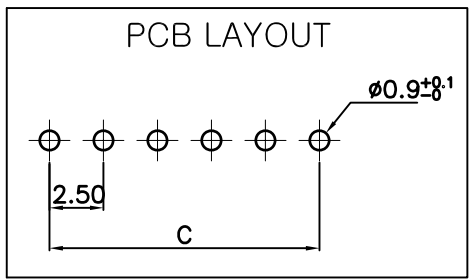


REV No.	REVISION NOTE	DATE	DESIGN	CHECK	CHECK	APPROVE
▲						



	A	C
GWL250-2P	7.5	2.5
GWL250-3P	10.0	5.0
GWL250-4P	12.5	7.5
GWL250-5P	15.0	10.0
GWL250-6P	17.5	12.5
GWL250-7P	20.0	15.0
GWL250-8P	22.5	17.5
GWL250-9P	25.0	20.0
GWL250-10P	27.5	22.5
GWL250-11P	30.0	25.0
GWL250-12P	32.5	27.5
GWL250-13P	35.0	30.0
GWL250-14P	37.5	32.5
GWL250-15P	40.0	35.0



2	MOLD	PA66		UL94-V0			
1	PIN(0.64×13.1)	BRASS		TIN PLATED			
No.	DESCRIPTION	MATERIAL	Q'ty	TREATMENT	REMARKS		
1 ~ 4	±0.1	ITEM NAME	GWL250-02P-15P	DRAW NAME	GWL250-02P-15P	SCALE	1 / 1
4 ~ 16	±0.2	MODEL		DRAW No.	STD02-132	DATE	06.03.11
16 ~ 63	±0.3	DESIGNED	CHECKED	CHECKED	APPROVED	FILE No.	FIT-STD02-132
63 ~ 250	±0.5					REF' DWG	
250 ~ 1000	±0.8	GENERAL TOLERANCE		박환기			
1000 ~ 2000	±1.2						

THIS DRAWING CONTAINS CONFIDENTIAL INFORMATION PROPRIETARY TO GEO YOUNG. IT MUST NOT BE REPRODUCED OR DISCLOSED TO OTHERS OR USED IN ANY OTHER WAY IN WHOLE OR PART EXCEPT AS AUTHORIZED IN WRITING BY GEO YOUNG.